

KAMINWERK

EVERYTHING YOU NEED TO KNOW ABOUT THE KAMINWERK

PAGE 1: BASICS

PAGE 2: SOUND

PAGE 3 + 4: LIGHT

PAGE 5: PLAN VENUE

PAGE 6: GETTING THERE

PAGE 7: BUS & TRUCK

PAGE 8: WHAT SHOULD I DO

GIVE THIS DOCUMENT TO THE TOURMANAGER OR TO THE BUSDRIVER (WHOEVER IS THE WISER GUY)!

BASICS

VENUE AND OFFICE:

**KAMINWERK
KULTURZENTRUM MEMMINGEN E.V.
ANSCHÜTZSTRASSE 1
87700 MEMMINGEN**

CONTACT:

| | |
|--|--------------------------|
| OFFICE | +49 8331 991199 |
| FAX | +49 8331 991198 |
| BOOKING ROCK-METAL MATTHIAS RESSLER | +49 8331 991196 |
| MATTHIAS.RESSLER@KAMINWERK.DE | |
| BOOKING POP-JAZZ MICHAEL MÜLLER | +49 8331 991195 |
| MICHAEL.MUELLER@KAMINWERK.DE | |
| SOUND-LIGHT RAINER SCHNEIDER | +49 8331 991197 |
| RAINER.SCHNEIDER@KAMINWERK.DE | |

FLOORSPACE:

400 M²

AUDIENCE:

800 STANDING | 400 SEATED

STAGE:

WIDTH: 10 M | DEPTH: 7 M | HEIGHT: 1 M | CLEARANCE 6 M

LOADING:

5 M NO STEPS (SO WE REALLY DON'T NEED AN ARMY OF HANDS)

POWER:

3 X 200A TN-S

PARKING:

BEHIND VENUE (LOOK AT THE MAP AT PAGE 4)

BUSPOWER:

230V@16A, 400V@16A

WARDROBE 1:

20 M² WITH TOILETTE AND SHOWER - 1ST FLOOR

WARDROBE 2:

20 M² WITH TOILETTE AND SHOWER - 1ST FLOOR

WARDROBE 3 (SINGLE):

7 M² WITH TOILETTE AND SHOW - 1ST FLOOR

CATERING:

60 M² - 1ST FLOOR

INTERNET:

WIFI - PASSWORD CHANGES EVERY CENTURY

SOUND

FOH:

YAMAHA PM 3500 / 48
MIDAS VENICE 320 STEREO LINE-EINGANG , 3-BAND KLANGREGELUNG
DRAWMER DS 404 4-CH GAT
KLARK TECHNIK SQUARE ONE 8 CH MULTI GATE, COMP, LIMITER
BSS DPR 404 4
YAMAHA SPX 990
LEXICON PCM 80
TC-ELECTRONICS D-TWO STEREO-DELAY
TC-ELECTRONICS M-ONE XL MULTIEFFEKT

FRONT P.A./MONITORING

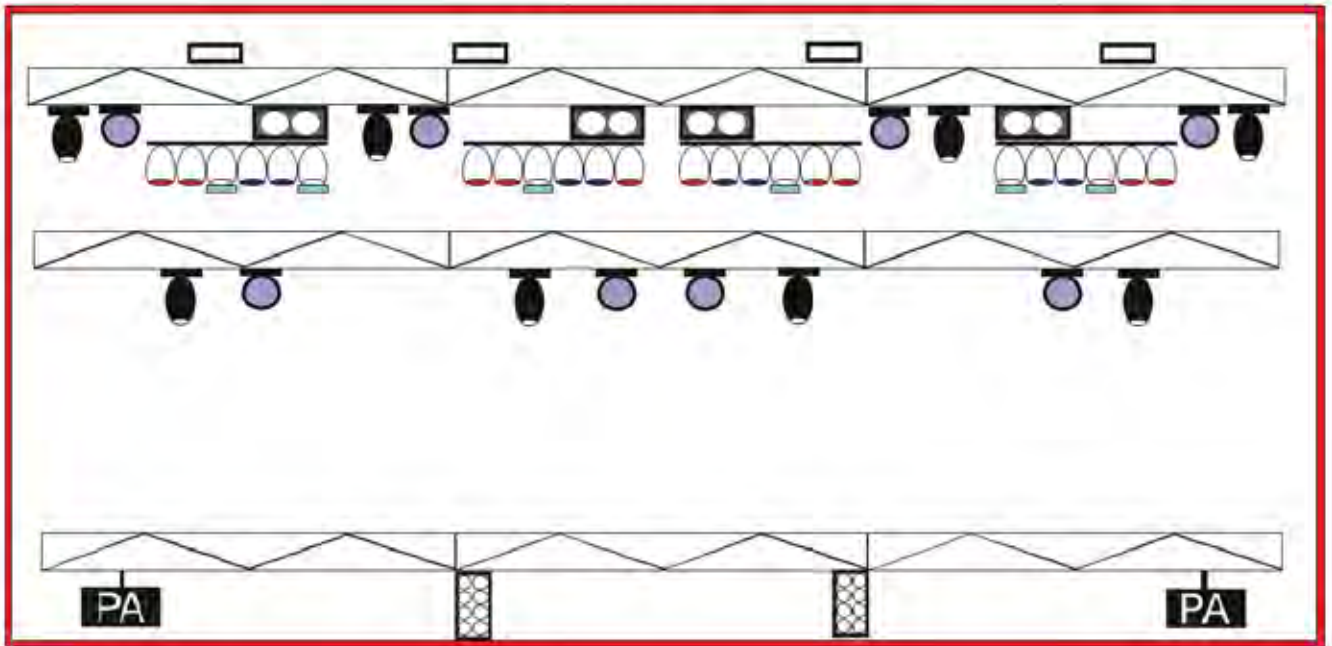
D&B LINE ARRAY Q1
8 X D&B LINE ARRAY Q1 SYSTEM SPEAKER / EP5
6 X D&B Q-SUB SUBWOOFER / EP5
2 X D&B B2 INFRA-SUBWOOFER / EP5
6 X D&B D12 DIGITAL-CONTROLLER-AMP
SOUNDCRAFT VI1 / 32 CH IN 24 OUT DIGITAL CONSOLE
LEXICON FX & BSS EQ ON BOARD
6 X D&B M4 MONITOR 15" + 1,3" , 50 X 70 CD
1 X D&B Q-SUB SUBWOOFER EP5 / (DRUMFILL)
2 X D&B Q7 SYSTEM SPEAKER / EP5 (SIDE- FILL O. NEAR FILL)
2 X D&B Q-SUB SUBWOOFER EP5 (FOR SIDE- FILL)
2 X SINGLE CD TYP PIONEER CDJ 800 MKII

MICROPHONES

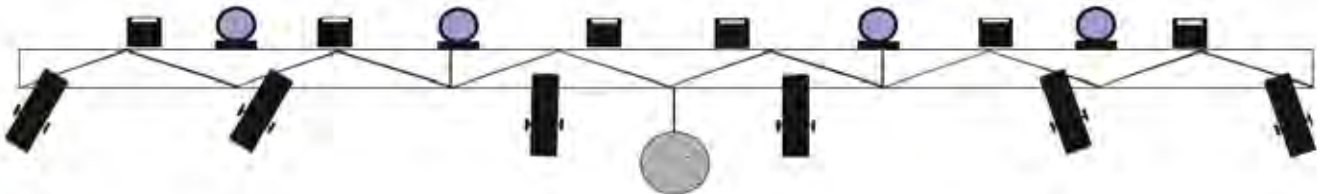
6 X SHURE INSTRUMENTALMIKROFON SM 58 LC
4 X SHURE INSTRUMENTALMIKROFON SM57
6 X AKG C391 KONDENSATORMIKROFON
3 X SHURE DRUM-MIKROFON BETA98 D/S INKL. MONTAGEKIT
1 X SHURE KICK-DRUM MIKROFON BETA 52
2 X SENNHEISER FUNKMIKROFON TYP EW 345 / NIERE
7 X LD-SYSTEMS AKTIV-DI-BOX

LIGHT

backdrop truss with motors



Plot ist ohne Maßstab
 Es wird definitiv nicht in einer Umriss Backtruss gebaut !!!
 Plot is without scale
 There is no way to hang lamps in or out off backtruss !!!

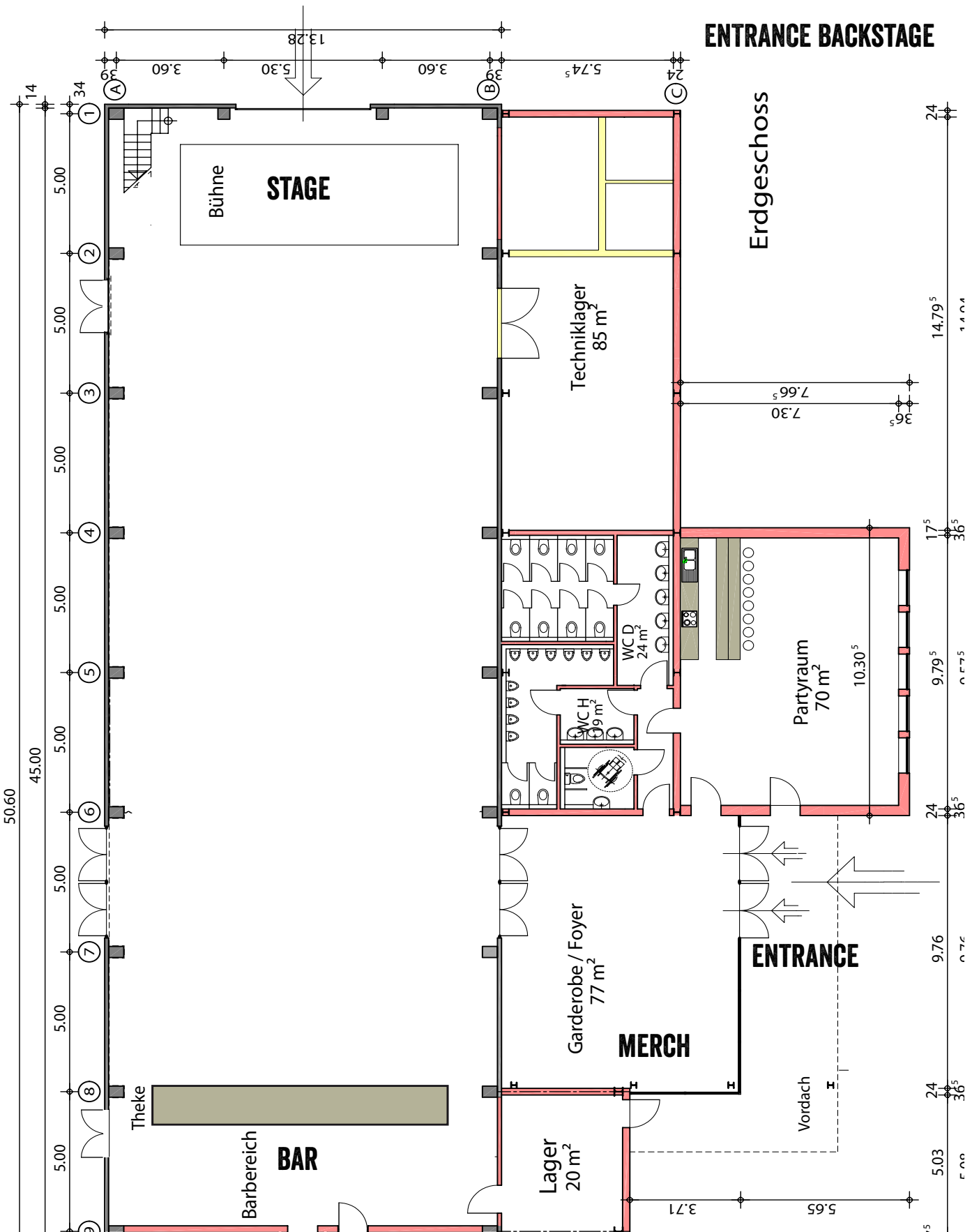


KAMINWERK
 Rainer Schneider
 Fon +49 (0) 8331/991197
 Fax +49 (0) 8331/991198
 technik@kaminwerk.de

-  18 170 (Mantel) 11-24 CH
-  Stereo-Dance / Art
-  Finger
-  Starbo Die CS-2
18 CH / ACS Move
-  Fan 110/120mm
-  18 170 (Mantel) 11-24 CH
-  Truss 100
-  18 Lux-Winder
4CH
-  Colour-Sector
1,0R Express 4 CH
-  Truss 100
- 

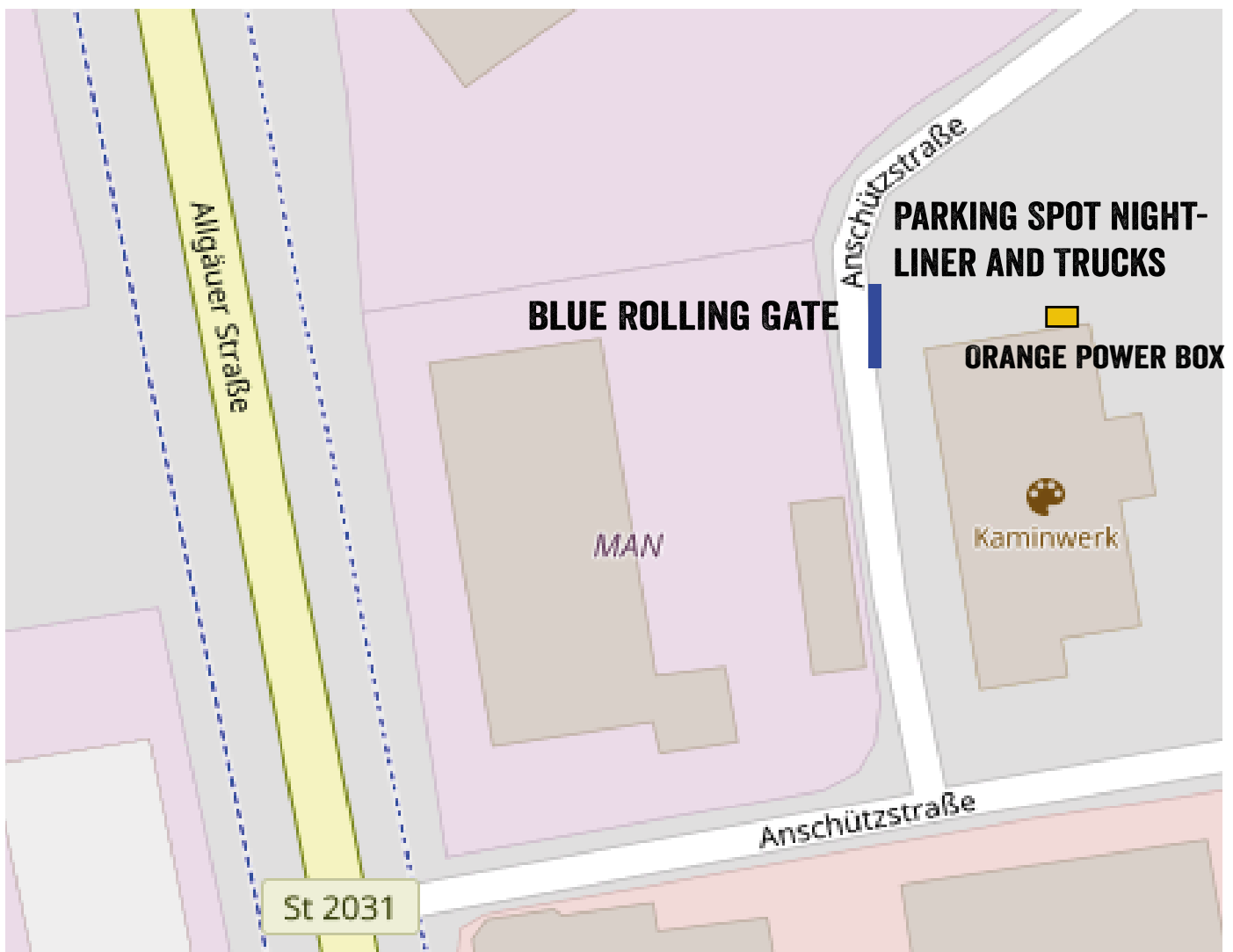
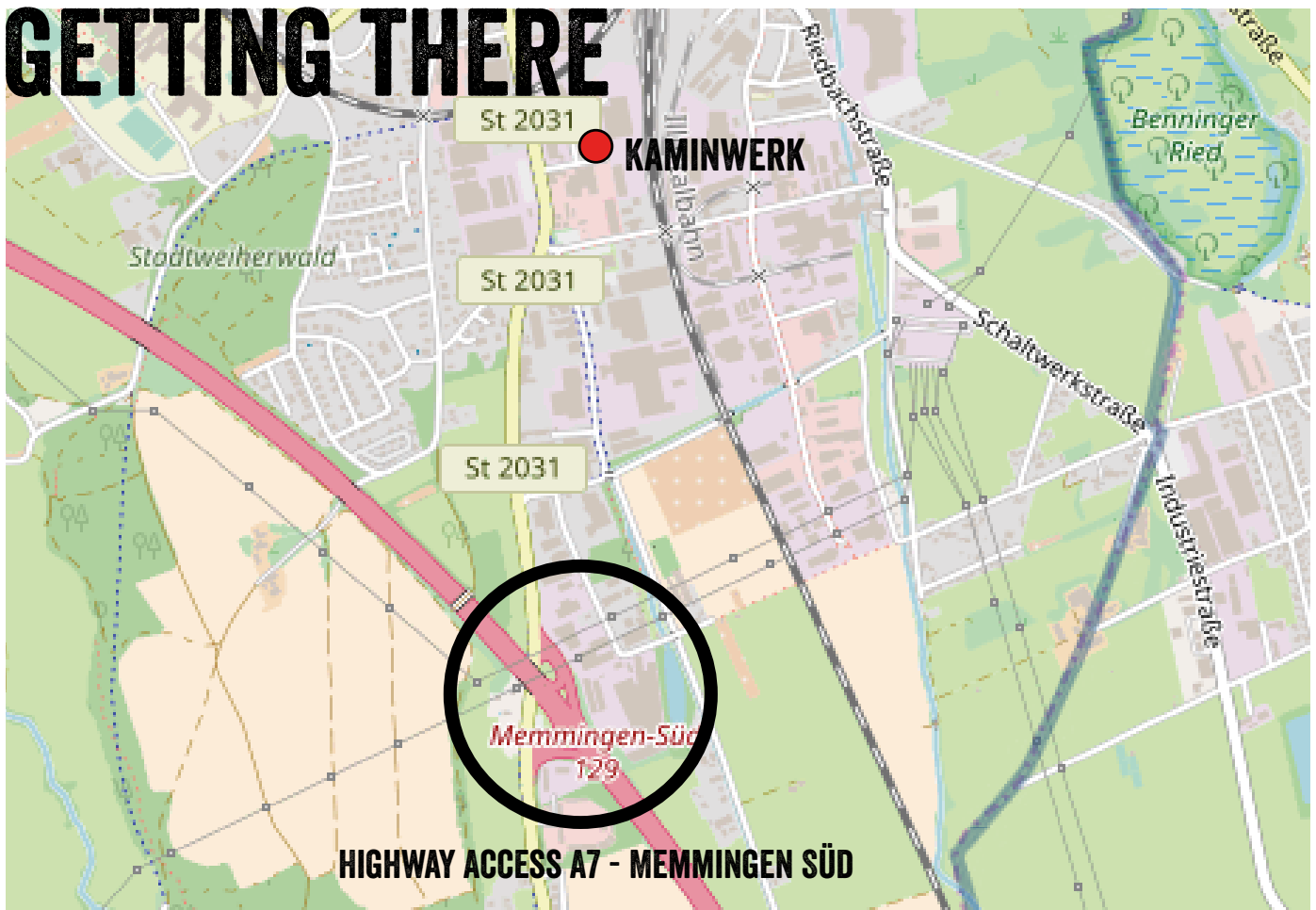
DMX Channel - Kaminwerk 2023

| CH | UNI 1 | CH | UNI 1 |
|-------|----------------------------|-------|-------------------------------------|
| 1.001 | Par64 Lee 106 backtruss | 1.049 | Studio Due CS-2 (14ch) backtruss |
| 1.002 | Par64 Lee 106 | 1.063 | Studio Due CS-2 (14ch) |
| 1.003 | Par64 Scroller 1 | 1.077 | Studio Due CS-2 (14ch) |
| 1.004 | Par64 Lee 120 | 1.091 | Studio Due CS-2 (14ch) |
| 1.005 | Par64 Lee 120 | | |
| 1.006 | Par64 Scroller 2 | 1.105 | LDR Scroller Par64 (4ch) |
| 1.007 | Par64 Lee 106 | 1.109 | LDR Scroller Par64 (4ch) |
| 1.008 | Par64 Lee 106 | 1.113 | LDR Scroller Par64 (4ch) |
| 1.009 | Par64 Scroller 3 | 1.117 | LDR Scroller Par64 (4ch) |
| 1.010 | Par64 Lee 120 | 1.121 | LDR Scroller Par64 (4ch) |
| 1.011 | Par64 Lee 120 | 1.125 | LDR Scroller Par64 (4ch) |
| 1.012 | Par64 Lee 106 | | |
| | | | LDR Xpress 19 – Scroller (4ch) |
| 1.013 | stage dim 1 – free chanel | | ch1: color |
| 1.014 | stage dim 2 – free chanel | | ch2: speed (max) |
| 1.015 | stage dim 3 – free chanel | | ch3: control |
| 1.016 | stage dim 4 – free chanel | | ch4: reset |
| 1.017 | stage dim 5 – free chanel | | |
| 1.018 | stage dim 6 – free chanel | | |
| | | | |
| 1.019 | 1kw LEO fresnel fronttruss | | |
| 1.020 | 1kw LEO fresnel | | |
| 1.021 | 1kw LEO fresnel | 1.038 | picture 1 / audience light cat walk |
| 1.022 | 1kw LEO fresnel | 1.039 | Picture 2 / audience light cat walk |
| 1.023 | 1kw LEO fresnel | 1.040 | Picture 3 / audience light cat walk |
| 1.024 | 1kw LEO fresnel | | |
| | | 1.042 | profiler mirror ball cat walk |
| 1.025 | 8-lite left PA-truss | | |
| 1.026 | 8-lite left | | |
| 1.027 | 8-lite left | | |
| 1.028 | 8-lite left | 1.043 | profiler fronttruss |
| | | 1.044 | profiler |
| 1.031 | 8-lite right PA-truss | 1.045 | profiler |
| 1.032 | 8-lite right | 1.046 | profiler |
| 1.033 | 8-lite right | 1.047 | profiler |
| 1.034 | 8-lite right | 1.048 | profiler |
| | | | |



PLAN VENUE

GETTING THERE



BUS & TRUCK



WHAT SHOULD I DO?

ARE YOU BORED OF STARING INTO THE TABLET OR ON YOUR SMARTPHONE?

THE EVERYDAY TOURLIFE IS DRIVING YOU NUTS?

BEFORE YOU GO BERSERK, PLEASE CHECK OUT THE SURROUNDINGS OF THE KAMINWERK!

MEMMINGEN IS A LOVELY MEDIVAL TOWN IN THE HEART OF SWABIA. CHECK OUT THE MUSEUMS, ENJOY A SHOPPINGTRIP OR TAKE A COFFEEBREAK ON THE MARKETPLACE IN FRONT OF THE TOWN HALL. YOU CAN REACH THE TOWN CENTER IN 15 MINUTES WALKING DISTANCE.

IF YOU LIKE TO GO FOR A WALK IN THE NATURE, A FEW MINUTES AWAY FROM THE KAMINWERK IS THE FOREST WITH MANY COZY HIKING TRAILS. OR GO TO THE BOULDER-HALL A FEW STEPS AWAY.

JUST ASK US WHAT YOU CAN DO IN MEMMINGEN - DON'T BE A LAZYPONE WITH A BAD MOOD!

